

butech

**THE XXVII EDITION
THE XXVII EDITION**
INTERNATIONAL EXHIBITION MUESTRA INTERNACIONAL





SPIRIT OF INNOVATION

BUTECH has invested in the latest technology to develop technical solutions which facilitate the commissioning and delivery of even better designs using PORCELANOSA ceramics.

Over the last few years, BUTECH has introduced innovative installation materials, decorative profiles, shower tray and levelling systems which have become an industry standard. Moreover, BUTECH is a leading company in innovation and development of façade systems for the various cladding materials from Grupo PORCELANOSA: STON-KER, PAR-KER, URBATEK, XLIGHT, NATURAL STONE AND KRION.

TRUSTED PROFESSIONAL SOLUTIONS

BUTECH is part of Grupo PORCELANOSA, a world leader in the design and production of superior quality ceramics. Following on from adhesives and sealing materials for ceramics, BUTECH has evolved to more complex installation systems such as façades and technical flooring.

BUTECH's main aim is to provide PORCELANOSA customers with materials and installation systems which enable successful installation of any type of ceramic flooring or cladding.

BUTECH knows what every kind of ceramics needs and offers technical as well as decorative solutions which allow its installation with total success guarantee.

butech



INDEX

6 Products for tile installation

- 8** reco
- 12** colorstuk 0-4 n and colorstuk rapid n
- 13** epotech aqua
- 14** self-leveling spacers
- 15** butech comfort knee pad
- 16** black linear grate
- 17** butech anti-cracking mat
- 18** decorative profiles: texture collection
- 22** 3 meter profiles
- 24** Pack PORCELANOSA
- 26** Pack VENIS
- 28** Pack URBATEK
- 30** Pack L'ANTIC COLONIAL

32 Unit-Systems

- 34** Modfacade
- 36** Monobath
- 36** Monokitchen

40 butech projects

- 42** PORCELAIN Facade System
- 44** KRION Facade System
- 46** XLIGHT Facade System
- 48** XLIGHT & XTONE tools

50 Raised access flooring

- 52** Raised Access Flooring for interior
- 54** Raised Access Flooring for exterior



products for tile installation



reco

*Tú cambias el mundo
Change the world
Tu change le monde*



reco

reco is the first adhesive additive for ceramic tiles installation that includes recycled plastic, helping to reduce pollution by plastics in oceans and continents.

reco includes 250 gr of 100% postconsumer recycled plastic, equivalent to 50 supermarket bags; if all the tiles produced by PORCELANOSA Grupo were installed with **reco**, it would reduce 800 Tm / year of plastic spills, that represents 0.01% of the total plastics poured to the oceans.



reco 250 gr

B16901002

100277878



reco

colorstuk 0-4 n

colorstuk 0-4 n is a type CG 2 AW fine grain grouting material as per EN 13888, for grouting joints up to 4 mm. It is easy to apply, resistant and color stable, and it is specially recommended for rectified tiles.

New grouting material with an improved formula and the same exclusive colours for tile joints from 0 to 4 mm. Suitable for all kinds of ceramic tiles and natural stone. Indoors and outdoors.



colorstuk rapid n

colorstuk rapid n is a type CG 2 high-performance, cement-based grouting material as per EN 13888, for grouting joints up to 15 mm. Suitable for all kinds of ceramic tiles and natural stone, it is specially recommended for outdoor applications and permanently damp environments.

A high-tech, fine grained colored mortar with fast setting and hardening times for grouting tile joints up to 15 mm. Suitable for all kinds of ceramic tiles and natural stone. Indoors and outdoors.

epotech aqua

epotech aqua is a new line of epoxy putties for grouting tile joints. Two-component epoxy putty with no organic solvents. It is waterproof, it has outstanding chemical and mechanical properties and it is easy to apply. Specially recommended for application on mosaics and ceramic tiles with relief.

This material is suitable for grouting joints from 0 to 10 mm in floor and wall tiles, indoors and out. Excellent resistance to chemicals. Suitable for pools and permanently damp environments. Suitable as high adherence grouting material for ceramic tiles with any absorption level and format, for glass mosaic or natural stone.



colorstuk 0-4 n

B21522262 100275725
perla



colorstuk rapid n

B21522263 100275760
perla



epotech aqua

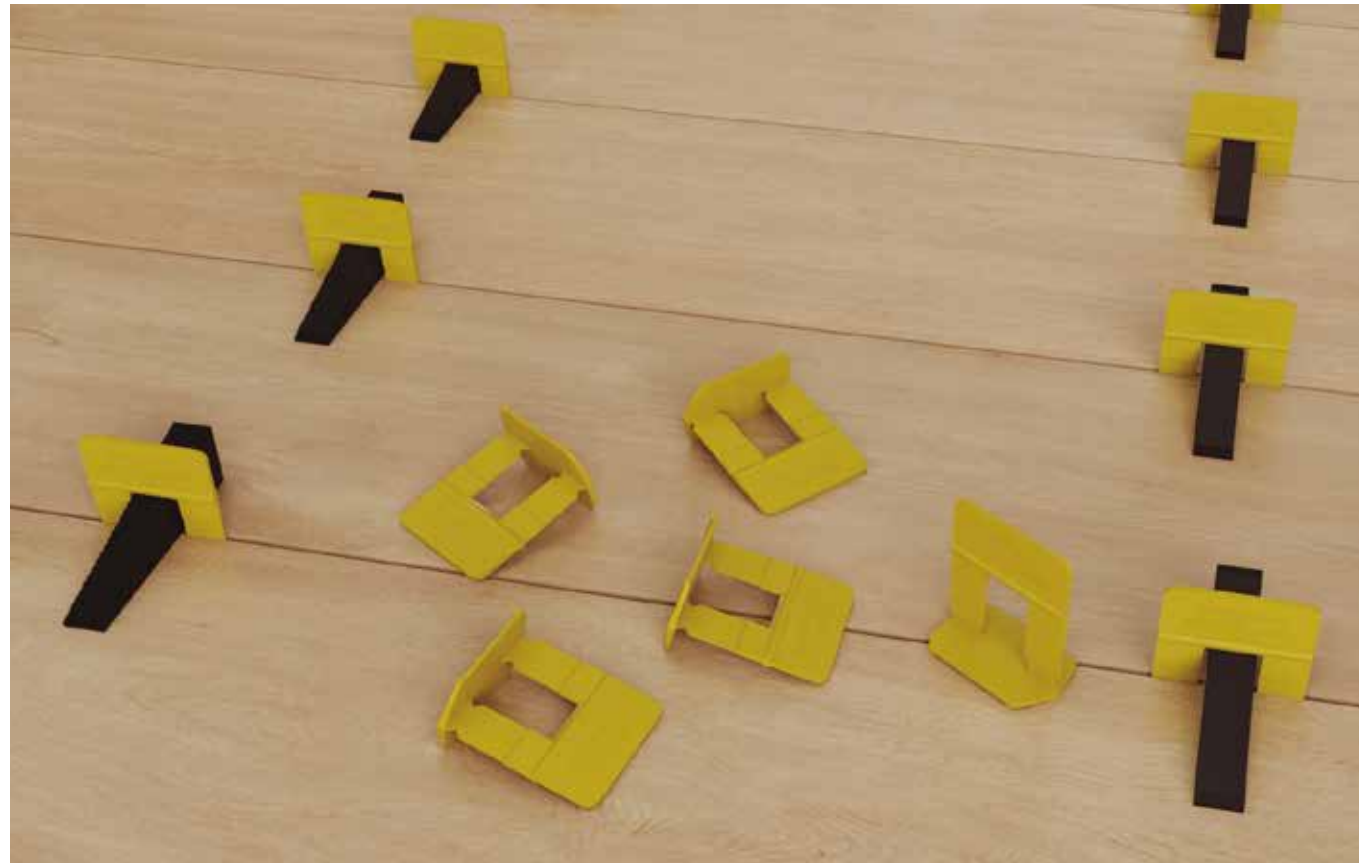
B42562045 100278329 cement
B42562043 100278467 manhattan
B42562042 100278474 tabaco
B42562044 100278500 negro
B42562037 100182222 beige



self-leveling spacers

Self-leveling system for ceramic tiles. Eases ceramic tile laying and guarantees a perfectly flat surface of the final installation. The system consists of a new type of spacer with adjustable height that levels the surrounding tiles and prevents them from moving.

Specially recommended when tile, design or use features demand a perfect finish, with an even, seamless surface.



self-leveling spacers

self-leveling spacers for tiles 3 to 15 mm thick

B83510095	100207811	0,5 mm spacer
B83510094	100207797	0,5 mm spacer
B83510093	100207740	0,5 mm spacer
B83511059	100108026	1 mm spacer
B83511058	100108027	1 mm spacer
B83511065	100108028	1 mm spacer
B83511061	100108029	2 mm spacer
B83511060	100108030	2 mm spacer
B83511057	100095382	2 mm spacer
B83511067	100109070	3 mm spacer
B83511066	100109071	3 mm spacer
B83511070	100109072	3 mm spacer
B83511083	100275166	5 mm spacer
B83511082	100275156	5 mm spacer
B83511085	100275138	5 mm spacer

self-leveling spacers for tiles 3 to 20 mm thick

B83511079	100225039	2 mm spacer
-----------	-----------	-------------

complements

B83511063	100108031	wedge
B83511062	100108032	wedge
B83511056	100095383	wedge
B83511072	100123264	supplementary lift piece
B83510071	100095386	adjustment tool
B83510098	100213808	0,5 mm spacer system kit
B83511064	100108034	1 mm spacer system kit
B83511069	100109073	2 mm spacer system kit
B83511068	100109074	3 mm spacer system kit
B83511084	100275157	5 mm spacer system kit

*kit: 1 adjustment tool, 100 spacers and 100 wedges

butech comfort knee pad

Essential to improve comfort during manual jobs involving knees - suitable for professional and private use. As well as keeping you clean, it protects your knees and, above all, your back (from lower back pain) by providing comfortable support. It can be placed on one or both knees, for user comfort.

Material used: state-of-the-art expanded polypropylene which is high-strength, 100% recyclable, non-polluting, with outstanding shape memory and a long service life.



black linear grate



black linear grate

B82902213 100278946 59,6x9,3 cm

butech anti-cracking mat

Decoupling sheet for floors undergoing low and medium movements.

It reduces the transfer of tensions and stresses between the substrate and the flooring, protects the flooring against the appearance of cracks in the substrate or sideways movements between the slabs forming the substrate and allows ceramic or natural stone flooring to be laid on substrates and structures with medium and low movements such as wooden panels. Suitable for indoor and outdoor use.



anti-cracking mat



anti-cracking mat roll 15 m²
B85900058 100227223

Features:

- Closed-cell elastomer sheet coated on both sides with non-woven fibers that allow cement-based adhesives to be anchored.
- It allows for direct laying of ceramic tiles with cement-based adhesive types C2 S1 according to EN 12004.



texture collection

Chromed brass decorative profile for wall tiles. It substitutes the traditional decorative ceramic frieze. Typical LIFESTYLE by PROCELANOSA profile.

Suitable for trimming corners and transitions between ceramic tiles.

pro-part coal

pro-part coal 11mm

100269081





texture collection

Chromed brass decorative profile for wall tiles. It substitutes the traditional decorative ceramic frieze. Typical LIFESTYLE by PROCELANOSA profile.

Suitable for trimming corners and transitions between ceramic tiles.

pro-part bone

pro-part bone 11mm

100269007





3 metres profiles

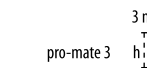
Corner profiles for wall tiles. Available in different shapes, from right-angled profiles for straight trims to rounded shape profiles.

pro-mate 2



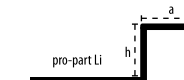
pro-mate 2 inox V2A 11mm	B71342749	100276385
pro-mate 2 inox V2A 12,5mm	B71342738	100276386

pro-mate 3



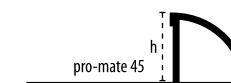
pro-mate 3 PVC white 12,5mm	B71342740	100276394
pro-mate 3 alum. anod. 11mm	B71342730	100276187
pro-mate 3 alum. anod. 12,5mm	B71342729	100276196

pro-part Li



pro-part Li inox V2A 11mm	B71342741	100276440
pro-part Li inox V2A 12,5mm	B71342742	100276480
pro-part Li inox gloss 11mm	B71342744	100276510
pro-part Li inox gloss 12,5mm	B71342747	100276459
pro-part Li inox brushed 12,5mm	B71342743	100276492
pro-part Li alum. anod. 11mm	B71342732	100276208
pro-part Li alum. anod. 12,5mm	B71342731	100276198

pro-mate 45



pro-mate 45 PVC white 11mm	B71342739	100276415
pro-mate 45 inox. 10mm	B71342735	100276371
pro-mate 45 inox. 12,5mm	B71342736	100276372
pro-mate 45 alum. anod. 10mm	B71342737	100276367
pro-mate 45 alum. anod. 12,5mm	B71342748	100276299
pro-mate 45 alum. lac. white 11mm	B71342734	100276352
pro-mate 45 alum. lac. white 12,5mm	B71342733	100276319



Pack PORCELANOSA

butech products

1 Wall & floor tile adhesive
**one-flex Premium
r Eco**



2 Grouting material
**colorstuk 0-4
colorstuk especial n**



3 Spacers
self-levelling spacers 1mm



4 Corner profile
pro-mate 3 chrome



5 Substrate preparation
level 3





Pack VENIS

butech products

- 1 Wall & floor tile adhesive
**super-flex s2
r Eco**
- 2 Grouting material
epotech aqua
- 3 Spacers
self-levelling spacers 1mm
- 4 Corner profile
pro-part coal
- 5 Substrate preparation
**level 3
anti-cracking mat**
- 6 Waterproofing
imperband
- 7 Shower tray
Bespoke Shower deck system





Pack **URBATEK**

butech products

1 Wall & floor tile adhesive
super-flex S2
r Eco



2 Grouting material
colorstuk rapid n
colorstuk especial n



3 Corner profile
pro-part chrome 7mm



4 Transition profile between tile
pro-mate 5 chrome 7mm



5 Substrate preparation
Concept panel xps 6 mm
level 3



6 Underfloor heating
UFH Premium mat 5m²
Smart controller 8GM



7 Shower tray
Bespoke Shower deck system





butech products

1 Wall & floor tile adhesive
politech Premium



2 Grouting material
**colorstuk rapid n
epotech aqua**



3 Waterproofing
imperband



4 Substrate preparation
**Concept panel xps 6 mm
level 3**



5 Underfloor heating
**UFH Premium mat 5m²
Smart controller 8GM**



6 Shower tray
**Kit imperband refurbishment
Standard circular grate**



7 Waterproofing
standard n squared



UNIT/SYSTEMS

MODFACADES MONOBATH MONOKITCHEN



It is currently common in the construction industry to speed up manufacturing and onsite installation processes to reduce lead times.

To achieve this goal, a customized study of each project is the key requirement, with efficiency and quality control as essential features.

In addition to the need to meet ever-tighter deadlines, end users are more demanding about the quality of finishes, especially when it comes to high-end products.

This market trend represents an excellent opportunity to expand our range of products and services.

This is why we created UNIT-SYSTEMS, a new construction solution with the guaranteed quality of the PORCELANOSA Group.

A new line of construction systems that are finished and ready for onsite installation, consisting of:
Nueva línea de sistemas constructivos acabados y listos para su puesta en obra, compuesta por:

- **MODFACADES: Modular façades**
- **MONOBATH: Preassembled bath modules**
- **MONOKITCHEN: Preassembled kitchen modules**



MODFACADES

The façade modules are fully finished when they leave our factory, with the requested PORCELANOSA insulation, frame and finish.

As it is secured on guide rails, it is easy to assemble and level the parts of the modular system, thus reducing onsite construction times.



It is currently common in the construction industry to speed up manufacturing and onsite installation processes to reduce lead times.

To achieve this goal, a customized study of each project is the key requirement, with efficiency and quality control as essential features.

In addition to the need to meet ever-tighter deadlines, end users are more demanding about the quality of finishes, especially when it comes to high-end products.



MONOBATH

MONOKITCHEN

The modules for bathrooms and kitchens include all interior finishes, furniture, bathroom fittings and accessories and the plumbing and wiring, all ready for use.

A construction system that ensures quality and reduces lead times.

Quick and effective onsite installation; placing the modules in their final location requires nothing more than a hoisting system and an opening in the wall through which the bathroom or kitchen can pass.

UNIT/SYSTEMS

MODFACADES MONOBATH MONOKITCHEN

Our services have the following features:

- Customization of each project
- Quality
- Efficiency
- Sustainability
- Speed
- Control

All of the benefits of having a single partner with the guaranteed quality of the PORCELANOSA Group.



Process:

Engineering

Customized study to achieve optimal technical solutions.

Butech's technical team, with extensive experience in ventilated façades and modular systems, is ready to assist PORCELANOSA's customers in all phases of project development; from modular design and choosing materials to final onsite installation.

A highly qualified team that develops projects both at home and abroad.



Production

Manufactured with finishes of the highest quality: 100% PORCELANOSA.

State-of-the-art installations for products with high added value



Quality control

The expertise of our team and resources at our disposal allow us to perform standard testing in our facilities and control the traceability of our products.

Strict compliance with the most demanding domestic and international regulations.

Quality and Guarantee: 100% PORCELANOSA.



Logistics

Packaged and shipped to anywhere in the world.

Our logistical capacity and experience allows us to take on projects in any part of the world.

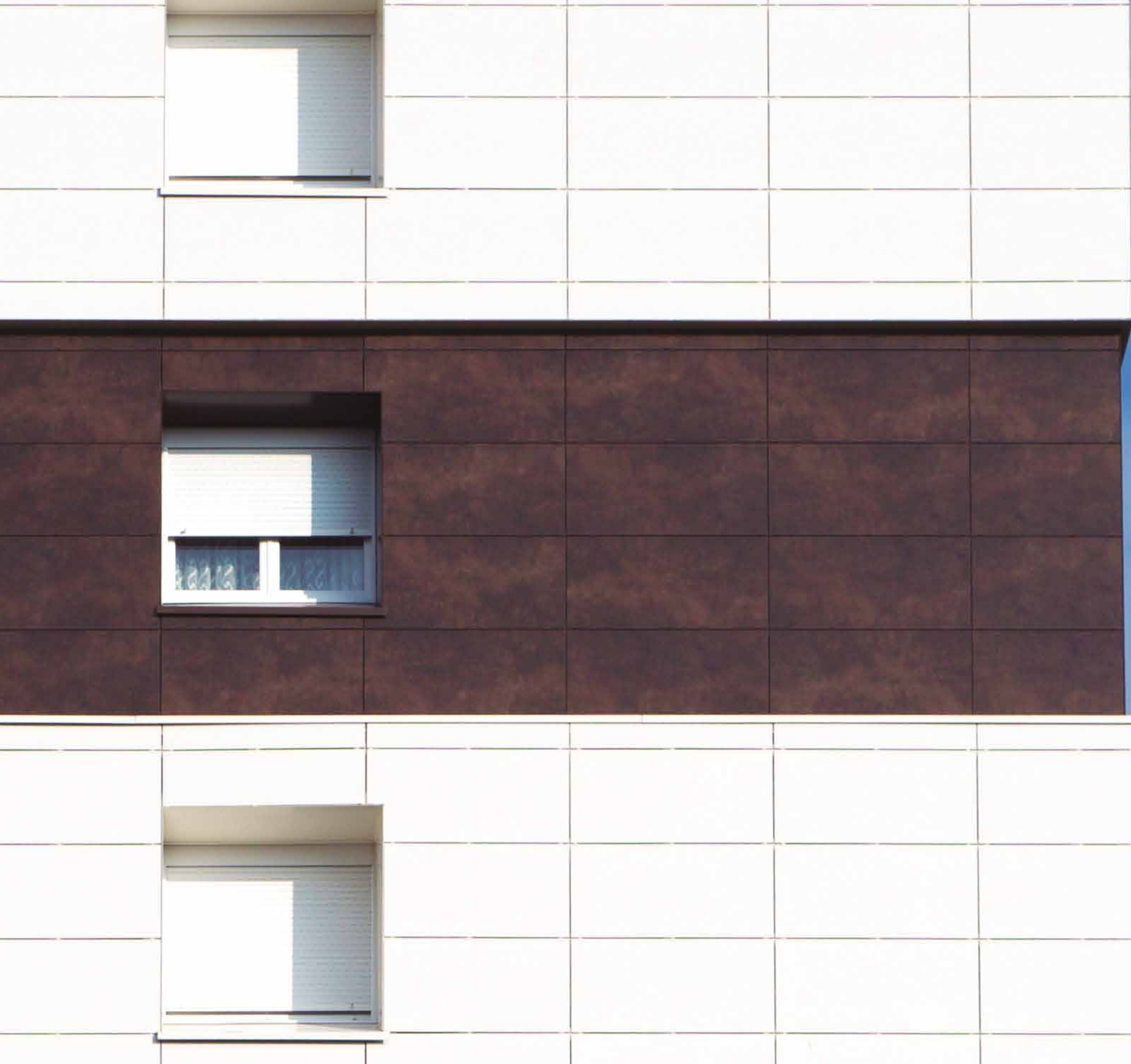
Perfectly packaged units, ready to be shipped and easy to install onsite.



Installation

Quick and precise installation for experienced professionals.

Everything from local projects to large international projects, our teams ensure the correct installation and assembly of our UNIT SYSTEM modular systems.



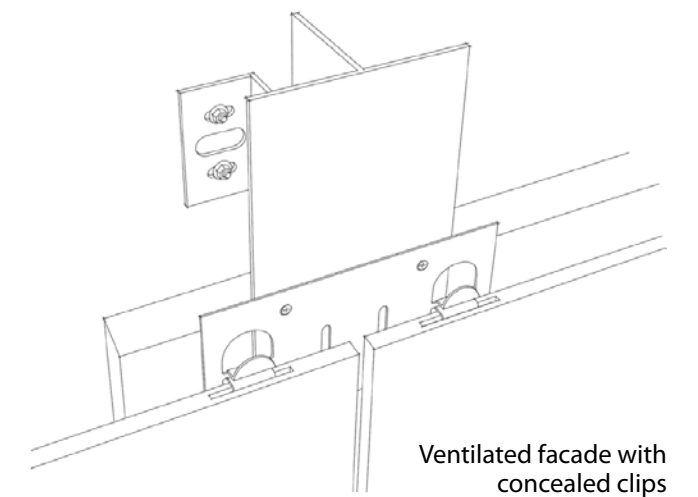
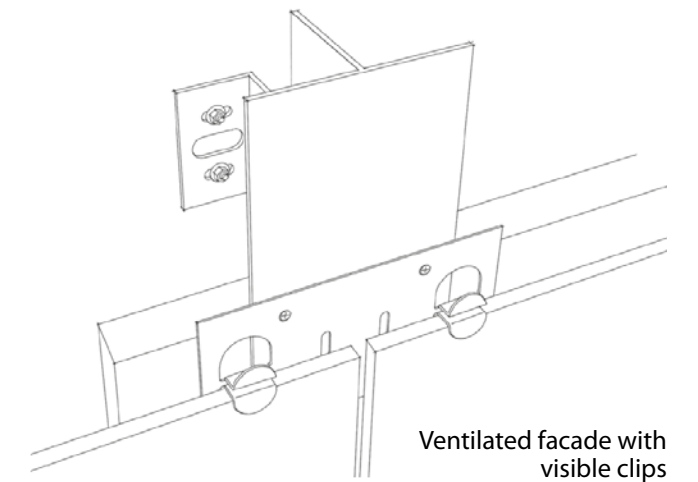
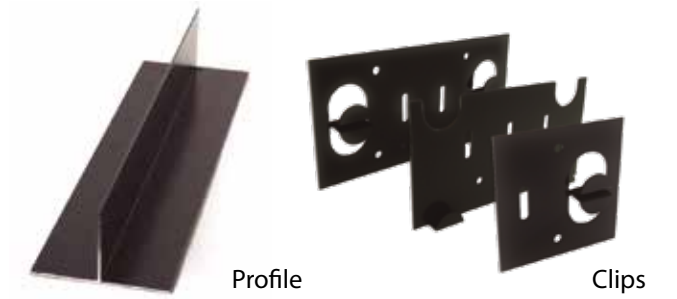
butech projects



Porcelain tile façade systems

Ventilated facade system with final porcelain panel covering.

It differs from other systems in the use of a dual fixing system: a chemical one using high-performance polyurethane putty and a mechanical one using stainless steel clips that ensure the union of the porcelain panels and metallic substructure.



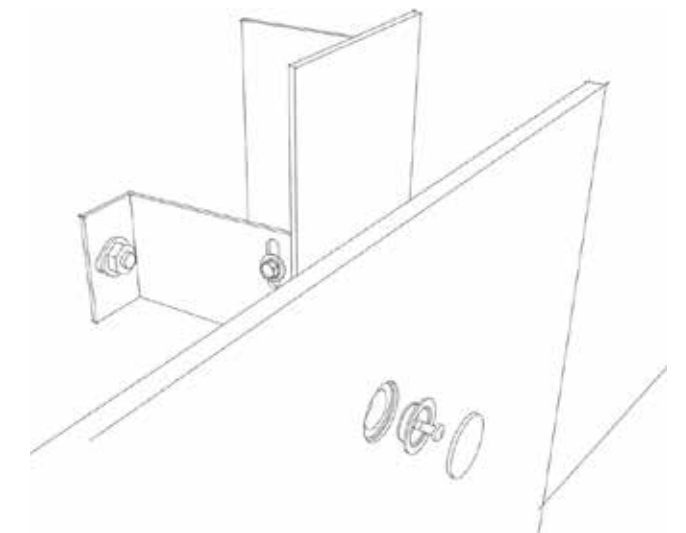
321 Wythe Avenue
New York, USA



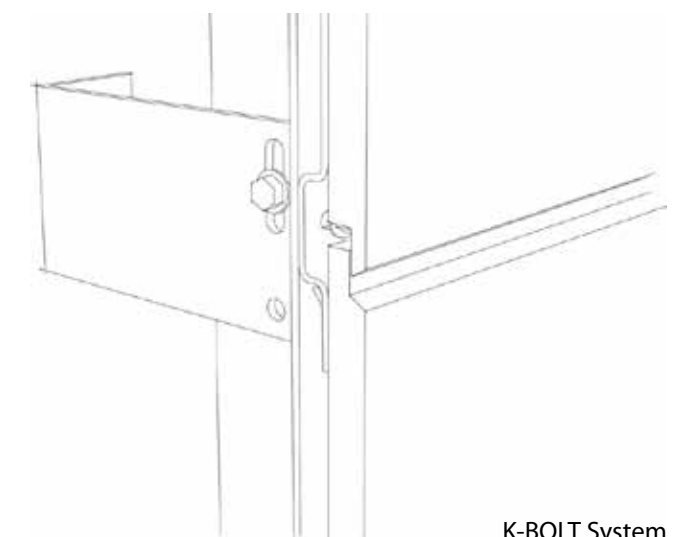
KRION® façade systems

Due to its non-porosity and proven resistance to adverse weather, the mineral compact from PORCELANOSA Grupo is also an ideal material for the design of facades.

KRION® is a new generation of solid surface developed by KRION, a company from PORCELANOSA Grupo. It is a mineral compact that is like natural stone. It is composed of two-thirds of natural minerals and a low percentage of high-resistance resins that provide it with exclusive characteristics: lack of pores, anti-bacterial, hardness, strength, durability, ease of repair, low maintenance, and easy to clean.

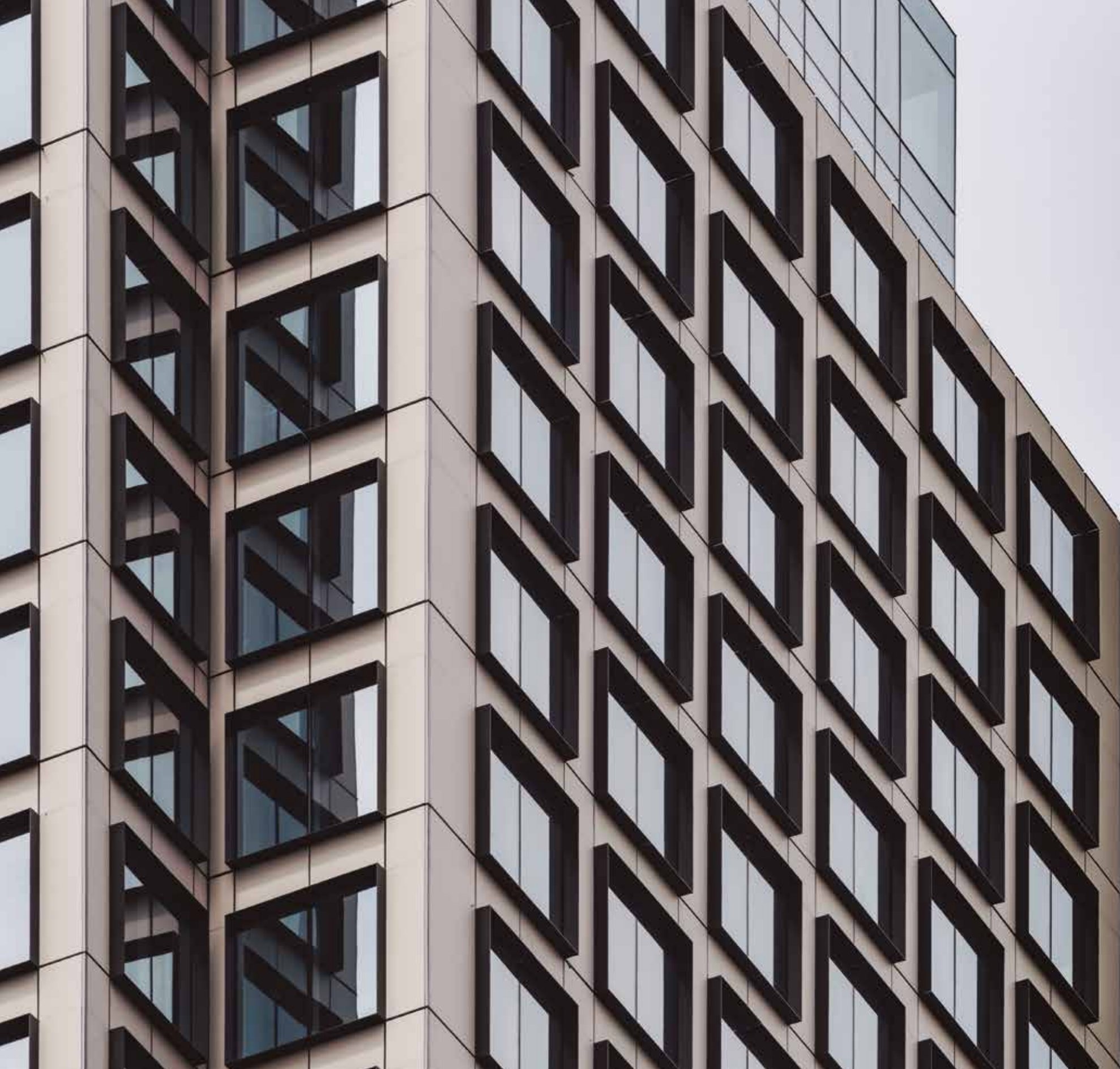


K-FIX System



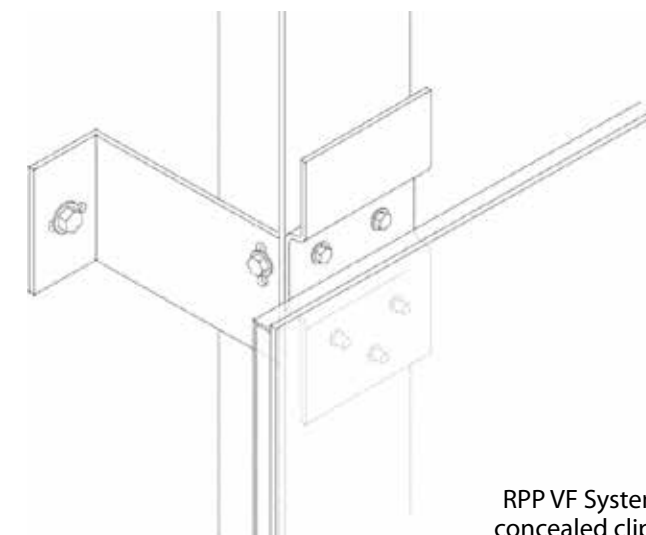
K-BOLT System

Satariano. 122 Msida Valley Road
Birkirkara, Malta

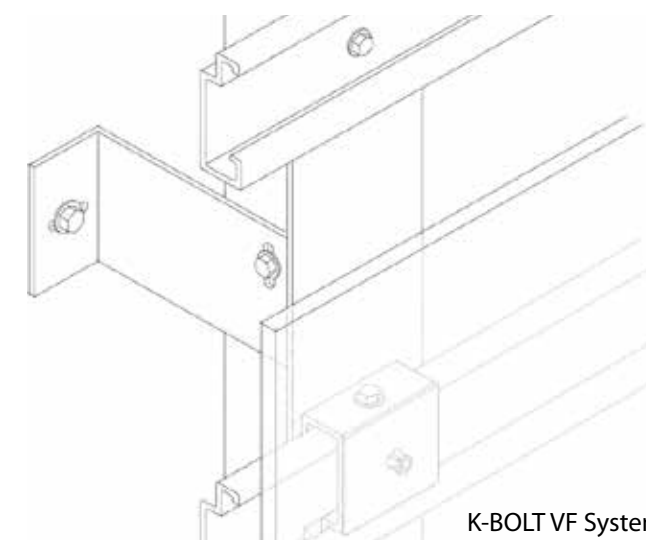


XLIGHT façade systems

Ventilated facade system with final XLIGHT-type porcelain panel covering. It differs from other systems in its use of a dual fixing system: a chemical one using high-performance polyurethane putty and a mechanical one using stainless steel clips that ensure the union of the porcelain panels to metallic substructure.



RPP VF System
concealed clips



K-BOLT VF System
concealed clips

515 West 36th Street
New York, USA



XTONE & XLIGHT tools



XLIGHT 340 Premium extending Frame 100242391



XLIGHT 340 Premium extending Frame 100201778



TSG XL 205 hand cutting machine 100179062



Large format transporter 100179062



Raised Access Flooring



Raised Access Flooring for interior (RAF)

The raised access flooring (RAF) is a system that was born from the need to hide the large number of building installations such as telephone, electricity wiring, piping, air conditioning, these are located in working areas, technical rooms.

These installations are hidden below the RAF panels, as a "technical plenum" which has been created with immediate and easy accessibility. It also lets us carry all the installations neatly.

Binter Canarias. Spain



Raised Access Flooring for Exterior (RAFx)

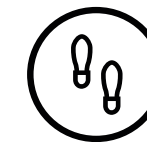
The raised access flooring system for terraces (RAFx), outdoors RAF, is created to provide a solution to the aesthetic problem that exists with the slopes of the current terraces and also hides facilities under the flooring. This system creates a completely flat floor, hiding the drainage slopes underneath.

The absorption of the slopes is achieved with height-adjustable plots and the drainage goes through the joint in the floor, which remains open and, subsequently, by the weatherproofed slopes of the terrace as far as the drain.

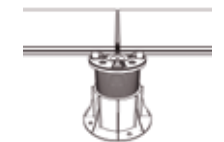
In case that the exterior raised access flooring cannot drain 100% of the water remaining on its surface, an auxiliary cleaning or drying must be addressed, especially under freezing conditions.

Applications: Terraces, balconies, trafficable roofs, shower trays and swimming pools.

Residencial and commercial use.



Exclusive use for moderate pedestrian traffic



PORCELANOSA floor tile suitable for Butech Raised Access flooring for exteriors

Windplot system for high wind loads



Residential Home. Jerez de la Frontera, Spain



BY APPOINTMENT TO
H.R.H. THE PRINCE OF WALES
MANUFACTURER AND DISTRIBUTOR
OF CERAMIC TILES AND BUILDING PRODUCTS.
PORCELANOSA GROUP LIMITED

butech
PORCELANOSA Grupo



This catalogue is protected under the Spanish Intellectual Property Act (Royal Decree 1/1996).
Any reproduction of its contents, in whole or in part, without the express consent of PORCELANOSA Grupo
will be subject to punitive action under the Spanish Criminal Code.